



**2 Aviation Maintenance
ROS-5**

(NDRF) to support the rapid worldwide deployment of U.S. military forces.

2 Missile Range Instrumentation Ships: ROS-5



As a key element of U.S. Department of Defense (DOD) strategic sealift, the RRF primarily transports Army and Marine Corps unit equipment, combat support equipment, and initial resupply during the critical surge period before commercial ships can be marshaled.

The RRF provides nearly one-half of the government-owned surge sealift capability. Management of the RRF program is defined by a Memorandum of Agreement (MOA) between DOD and U.S. Department of Transportation (DOT).



4 Crane ships:

RRF ships are owned by the DOT, Maritime Administration and managed under contracts with commercial U.S. ship managers for maintenance and repair, activation, crewing, and vessel operations.

The program began with 6 ships in 1977 and peaked at 102 in 1994. As of September 2021 it consists of 51 ships including 27 roll on/roll off (RO/

RO) vessels 8 Fast Sealift support vessels (FSS)), 8 training ships, 4 auxiliary craneships, 2 missile range instrumentation ships, 2 aviation repair vessels.

**27 RO/RO (roll-on/roll-off):
ROS-5**



Two RRF ships are homeported in the NDRF anchorage in Beaumont, Texas. The balance is berthed at various U.S. ports.



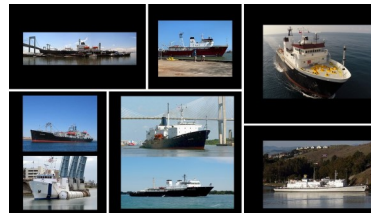
**8 FAST SEALIFT:
2 ROS-5**

RRF ships are expected to be fully operational within their assigned 5 and 10-day DOD assigned readiness status

and sail to designated loading berths. Commercial U.S. ship managers provide systems maintenance, equipment repairs, logistics support, activation, manning, and operations management by contract. Ships in priority readiness have Reduced Operating Status (ROS) maintenance crews of about 10 commercial merchant mariners that are supplemented by additional mariners during activations.

Readiness of the RRF is periodically tested by DOD directed activations of ships for military cargo operations and exercises.

**8 Training Ships:
ROS-5**



Ships in ROS do not need a shipyard to activate.

98% On-Time Activation



U.S. DEPARTMENT OF TRANSPORTATION
MARITIME ADMINISTRATION

Ready Reserve Force RRF



READY:

Not only tested and proven but maintained at the right level of readiness.



RELIABLE:

Once called upon, the RRF is depended on to operate full-time anywhere.



FOCUSED VALUE:

Preference lies with U.S. Flag capability while the RRF provides the best value of government-owned sealift.



RRF

RRF LOCATIONS with Contract End Dates

Tacoma, WA (2)

R-5 - CAPE INTREPID
R-5 - CAPE ISLAND
Sperry – Aug 2023

San Francisco, CA (5)

R-5 - CAPE HORN (Pier 50)
R-5 - CAPE HUDSON (Pier 50)
R-5 - CAPE HENRY (Pier 96)
Cal Sealift – Apr 2024
R-5 - ALGOL (Pier 80)
R-5 - CAPELLA (Pier 80)
PASHA – Nov 2027

Alameda, CA (2)

T-5 - GEM STATE (Pier 2 S)
T-5 - KEYSTONE STATE (Pier 2 S)
ARRA Lease Apr 2026

Oakland, CA (2)

R-5 - CAPE ORLANDO (B20/21)
R-5 - ADM CALLAGHAN (B20/21)
Pac Layberthing South Sep 2026

Long Beach, CA (2)

R-5 - CAPE INSCRIPTION
R-5 - CAPE ISABEL
Port of LB Lease Apr 2022

San Diego, CA (1)

A-5 – CURTISS
Navy Sponsored

**5 and 10 Day Vessels: R - RO/RO (35) T – TACS (4)
A – TAVB (2) OP – OPDS (0) S – SEABEE (0)
Readiness: -5, -10 days from notice to activate**



Philadelphia, PA (0)

~OPEN~

Philly Ship repair – Jul 2024

Baltimore, MD (4)

R-5 - CAPE WRATH (Pier 6)
R-5 - CAPE WASHINGTON (Pier 6)
Maryland Maritime - Nov 2023
R-5 - ANTARES (Pier 8)
R-5 – DENEbola (Pier 8)
Maryland Maritime - Aug 2028

Newport News, VA (2)

T-5 - CORNHUSKER STATE (Pier 23)
T-5 - GOPHER STATE (Pier 23)
NN Lease - 2027

Portsmouth, VA (3)

R-5 - CAPE RACE
R-5 - CAPE RAY
R-5 - CAPE RISE
Metro Machine - Jun 2024

Norfolk, VA (1)

A-5 - WRIGHT
PASHA – Nov 2022

Port of Beaumont (3)

R-5 - CAPE TAYLOR (B1)
R-5 - CAPE TEXAS (B7)
R-5 - CAPE TRINITY (B7)
EasTex berthing - Mar 2024

MARAD Layberth Facility (4)

Berth 1: TBD & TBD
Berth 2: TBD & TBD
Berth 3
R-5 REGULUS
R-5 POLLUX
Berth 4:
R-5 - CAPE VICTORY
R-5 - CAPE VINCENT
MARAD Owned

Marrero, LA (2)

R-5 – BELLATRIX
R-5 – ALTAIR
Dixie Marine – Aug 2028

New Orleans, LA (2)

R-5 - CAPE KENNEDY
R-5 - CAPE KNOX
MARAD Owned

Charleston, SC (6)

R-5 - CAPE DUCATO (Pier S)
R-5 - CAPE DECISION (Pier S)
R-5 - CAPE DIAMOND (Pier T)
R-5 - CAPE DOMINGO (Pier T)
R-5 - CAPE DOUGLAS (Pier U)
R-5 - CAPE EDMONT (Pier U)
Metal Trades Lease – Jan 2024

This chart is current. The date reflects the last change made in ships or location

September 27, 2021