

Office of Maritime and Intermodal Outreach

The Office of Maritime and Intermodal Outreach provides critical marine transportation outreach activities at our major U.S. gateway ports (see map below), driven by 10 of the largest ports on the West, East, and Gulf Coasts, the Great Lakes, and the inland river system. Offices located in these critical areas work with headquarters staff, state and local authorities, congressional representatives at the local and district level, and a broad range of port, shipper, and carrier

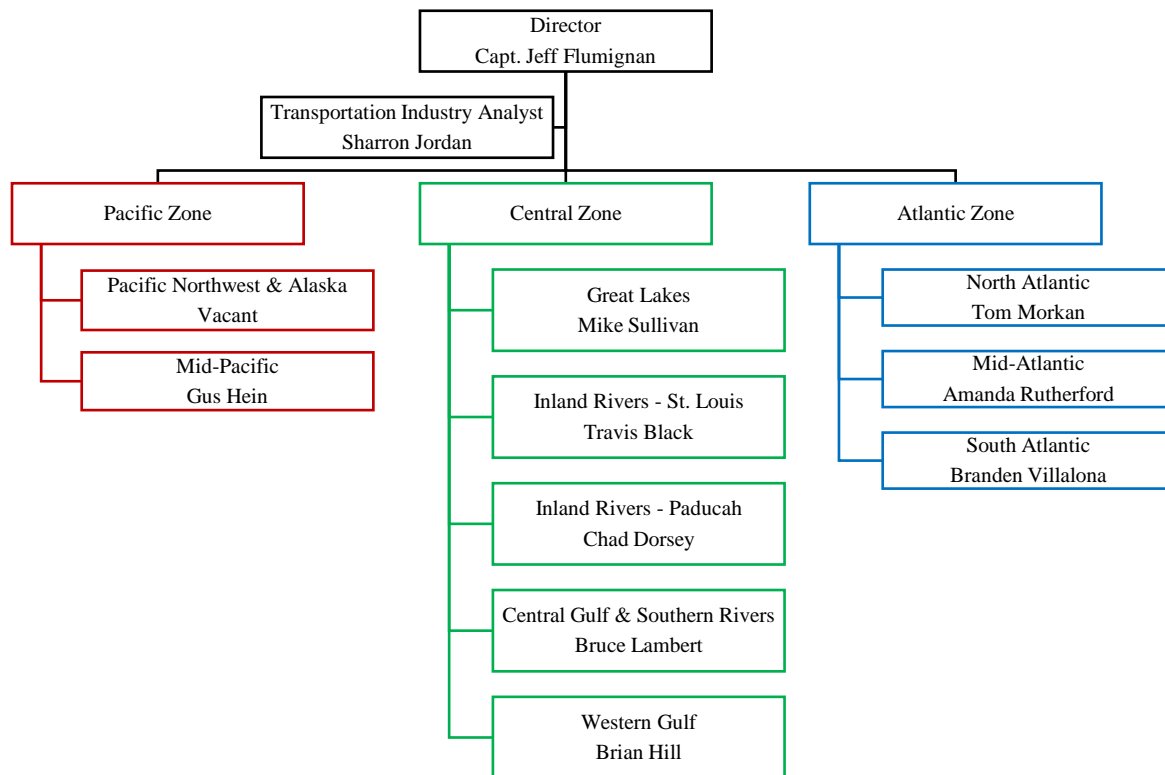


Figure 1- Office of Maritime & Intermodal Outreach Organization

stakeholders to cooperate on projects, identify Federal and state funding, and work on environmental and community challenges in the ports and their inter-modal connections. Gateway Offices are MARAD's day-to-day presence throughout the Marine Transportation System and are critical to the viability and effectiveness of the Maritime Administration and its future programs. At their core, they:

- identify transportation bottlenecks and ways to improve freight movement;
- act as liaisons for MARAD to help ensure that measurable progress is made on specific projects, as well as to bring Agency and Departmental expertise to the table; and
- work with stakeholders to promote collaboration among Federal, state, local and private partners on challenges facing the Marine Transportation System (MTS) in their areas of responsibility, focusing particularly on planning and environmental issues.

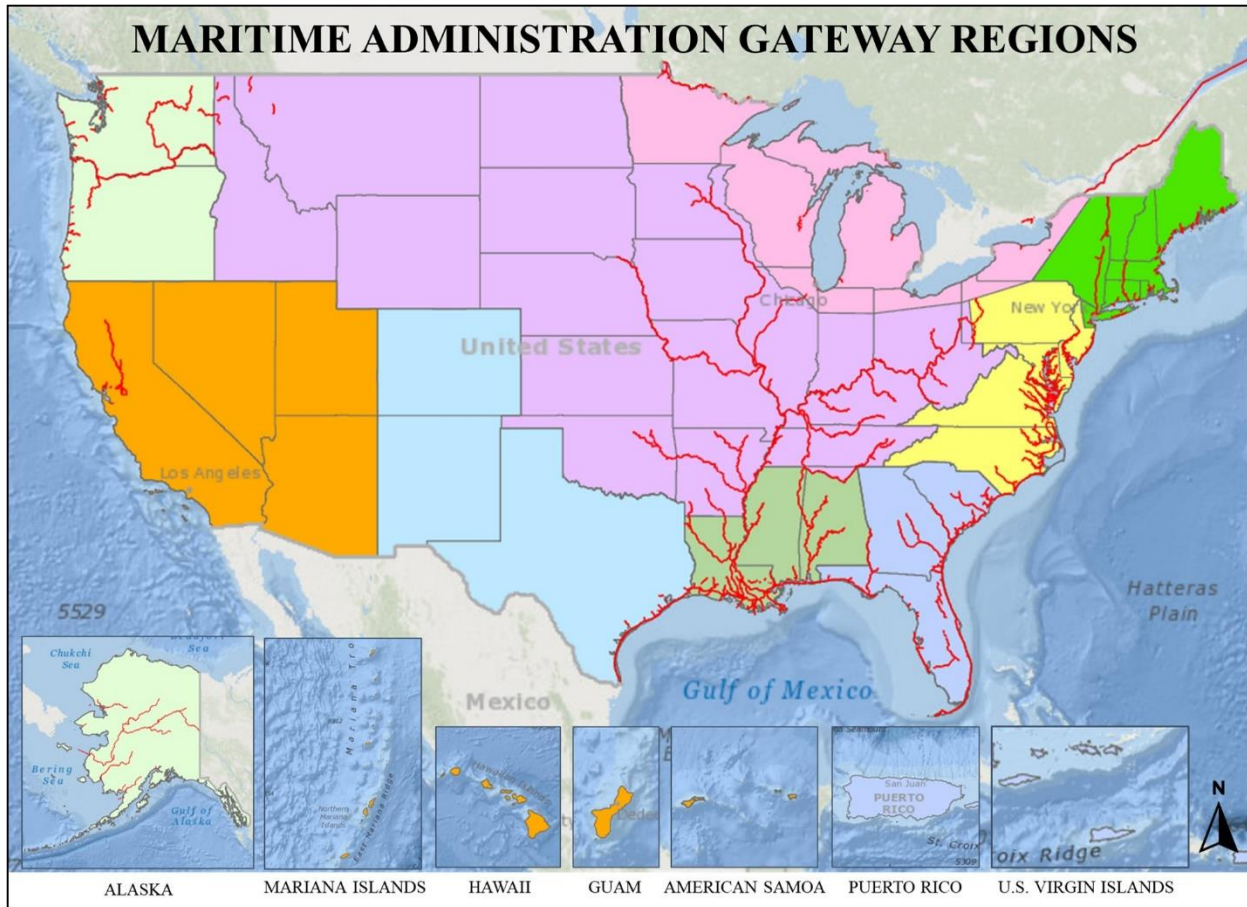


Figure 1- Office Locations & Gateway Regions

In addition, Gateway Offices support and place emphasis on the following Maritime Administration priorities:

- America's Marine Highways Initiative.
- Port Infrastructure Development.
- Improved delivery of Federal services to the MTS and ports through regular coordination and leadership at the local level.
- development of Deep-water Ports.
- the Passenger and Cruise Industry (including Ferries);
- Workforce Development (promoting opportunities for American employment);
- Emergency Preparedness and Response Activities; and
- Port Security

The Office is supported by a Transportation Industry Analyst.

Office Locations & Personnel

North Atlantic Gateway

Capt. Thomas Morkan, Director
US Department of Transportation
Maritime Administration
North Atlantic Gateway Office
One Bowling Green, Suite 418
New York, NY 10004

212-668-3330
C: 332-205-2573
Thomas.Morkan@dot.gov

Zanna Khurana
Port Development & Waterways Planning

Shawn Brede
Port Development & Waterways Planning

Mid-Atlantic Gateway

Amanda Rutherford, Director
US Department of Transportation
Maritime Administration
Mid-Atlantic Gateway Office
1200 New Jersey Ave, S.E. Mail Stop 3
Washington, DC 20590

202-366-1332
C: 202-595-4657
Amanda.Rutherford@dot.gov

South Atlantic Gateway

Mrs. Branden Villalona, Director
US Department of Transportation
Maritime Administration
Establishment of new office pending

202-366-9211
C: 202-384-6001
Branden.Villalona@dot.gov

Sharron Jordan, Transportation Analyst
US Department of Transportation
Maritime Administration

202-366-5562
C: 619-565-7661
Sharron.Jordan@dot.gov

Great Lakes Gateway

Robert M. Sullivan, Director
US Department of Transportation
Maritime Administration
Kluczynski Federal Building,
230 South Dearborn Street, Room 1582
Chicago, IL 60661

202-366-8574
C: 312-833-7888
Robert.M.Sullivan@dot.gov

Marlise Fratinardo
Port Development & Waterways Planning

Inland Waterways Gateway – St. Louis

Travis Black, Director
US Department of Transportation
Maritime Administration
Inland Waterways Gateway Office
1222 Spruce Street, Suite 2.202F
St Louis, MO 63103-2818

202-366-9087
C: 202-366-0433
Travis.Black@dot.gov

Rob Stewart
US Marine Highway Program

Inland Waterways Gateway - Paducah

Chad Dorsey, Director
US Department of Transportation
Maritime Administration
Inland Waterways Gateway Office
300 South 3rd Street
Second Floor
Paducah, KY 42003

202-366-4086
C: 202-997-6205
Chad.Dorsey@dot.gov

Central Gulf & Southern Rivers Gateway

Bruce Lambert, Director
US Department of Transportation
Maritime Administration
Eastern Gulf/Lower Mississippi Gateway Office
500 Poydras Street, Room 1223
New Orleans LA 70130

202-366-5209
C: 206-200-5744
Bruce.Lambert@dot.gov

Western Gulf Gateway

Brian Hill, Director
US Department of Transportation
Maritime Administration
Western Gulf Gateway Office
8701 South Gessner Rd, Suite 1235
Houston, TX 77074

202-366-8745
C: 281-635-0785
Brian.P.Hill@dot.gov

Pacific Northwest & Alaska Gateway

Vacant
US Department of Transportation
Maritime Administration
Henry M. Jackson Federal Building.
915 2nd Avenue, Room 2608
Seattle, WA 98174

202-366-5209
C:

Chris Clark
US Marine Highway Program

Mid-Pacific Gateway

Gustav Hein, Director
US Department of Transportation
Maritime Administration
Southern California Gateway Office
888 South Figueroa Street, Suite 440
Los Angeles, CA 90017

562-628-0246
C: 202-308-8968
Gustav.Hein@dot.gov