



Emergency Preparedness and Response

Maritime Administration FACT SHEET

The Maritime Administration’s (MARAD) Division of Sealift Operations and Emergency Response (MAR-612) develops and maintains plans for civil maritime transportation support of military mobilizations and civilian agency response to national emergencies. A division within MARAD’s Office of Ship Operations, MAR-612 coordinates the Agency’s Continuity of Operations Plan (COOP) and offsite facility for COOP. Working within governmental working groups and international governmental organizations, MARAD formulates international and national plans for maritime emergency and mobilization activities. MAR-612 manages the MARAD telecommunication center/Command Center (MCC) and supports the Department of Transportation’s Crisis Management Center (DOT CMC).

Emergency preparedness and response are functional responsibilities of MARAD under the National Response Framework (NRF), Emergency Support Function One (ESF-1), Transportation Annex. These responsibilities are specifically designed to support the expeditious recovery of the U.S. Marine Transportation System (MTS) and the restoration of associated waterborne commerce following a significant disruption to national waterway transportation.

Kevin M. Tokarski
Associate Administrator for
Strategic Sealift

Russ Alan Krause
Chief
Division of Sealift Operations
and Emergency Response

Voice: (202) 366-1031
Fax: (202) 366-8215
Email: russ.alan@dot.gov

When MARAD is activated for ESF-1 activities, the MARAD Command Center (MCC) provides critical support to the commercial maritime industry, Local, State and Federal authorities, by issuing maritime-related status reports, and monitoring maritime asset availability and economic impact information.

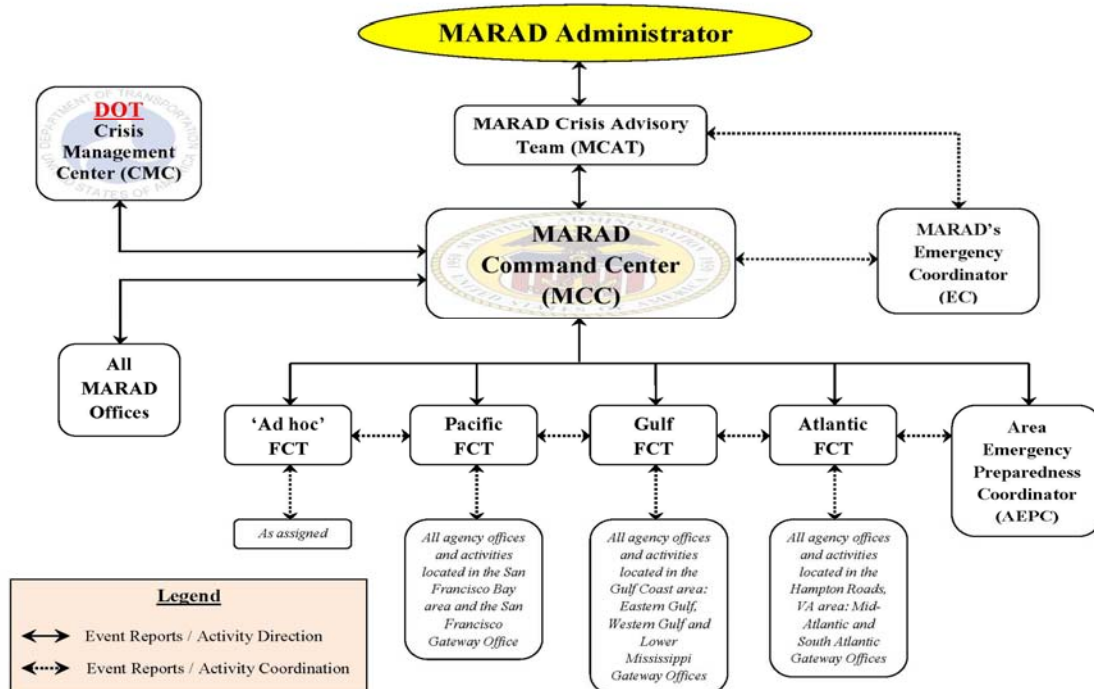
MARAD’s emergency response, when activated, is scalable to the nature, size or scope of the emergency. This design permits a tailored and efficient response, initiated, controlled and coordinated within the national Incident Command System (ICS) framework. Through the Emergency Response Planner, internal emergency response exercises are conducted annually to ensure the effectiveness of the Agency to meet ESF-1 requirements.

Within the emergency response toolkit, the National Shipping Authority (NSA) is an organizational grouping of functions within the Maritime Administration (MARAD). The NSA focuses on addressing shipping needs and maritime transportation issues during times of war and national emergency. In response to a gap discovered during a National Level Exercise, a review and update to the NSA was initiated, but the NSA will continue to utilize currently existing programs and authorities of MARAD during any contingency.

MARAD's emergency activities are designed and implemented based on assigned roles, responsibilities, and reporting protocols;

- The Maritime Administrator is responsible for the overall planning, direction, and coordination of the emergency planning activities of MARAD.
- The Chief of the Division of Sealift Operations and Emergency Response, as the Agency's Emergency Coordinator (EC), facilitates all emergency preparedness and response activities and is the primary liaison to the Department of Transportation's Crisis Management Center (DOT CMC).
- The Assistant Administrator, Associate Administrators, Superintendent of the U.S. Merchant Marine Academy (USMMA), and independent office directors are responsible for the emergency preparedness of their respective organizations.
- The MARAD Crisis Advisory Team (MCAT) advises the Administrator and provides consensus executive guidance.
- The MARAD Command Center (MCC) is utilized by all offices as the Agency's primary operational command and control center during emergency response operations and, in coordination with the EC, compiles and submits MARAD Emergency Reports to the DOT CMC.
- At the field level, Divisional Emergency Preparation & Response Specialists (DEPRS) are responsible for coordinating, facilitating, and advising EPR activities for the Area Division they are assigned to support.
- The DEPRS acts as the MARAD liaison to the Federal Emergency Management Agency (FEMA) during FEMA activations
- A Field Crisis Team (FCT) may be established to monitor field activities, coordinate field administrative actions and coordinate information gathering / coordination for field reporting to the MCC during an emergency event.
- Below is a graphical representation of MARAD's scalable approach to emergency response;

MAO 800-003-1
Attachment 1 – Crisis Information and Coordination Flow Diagram



For more information relating to MARAD's Emergency Preparedness and Response (EPR) activities, see the agency's EPR Outreach webpage:

http://www.marad.dot.gov/ports_landing_page/port_emergency/maritime_emergency_parednessandresponse.htm

References:

- Maritime Administration Fact Sheet: *Disaster Response Capabilities*
- Maritime Administration Fact Sheet: *National Shipping Authority*
- Maritime Administration Fact Sheet: *National Port Readiness Network*
- Maritime Administration Fact Sheet: *North Atlantic Treaty Organization (NATO) Transport Group Ocean Shipping (TGOS)*

Maritime Administration